

Anti-GDF15 hlgG1 Reference Antibody(Ponsbio)

Product Information

Product Name	Anti-GDF15 hlgG1 Reference Antibody(Ponsbio)
Storage temp.	Store at 2-8°C short term (1-2 weeks).Store at ≤ -20°C long term. Avoid repeated freeze-thaw.
Catalog# / Size	GM-87500MAB-1mg / 1 mg GM-87500MAB-5mg / 5 mg GM-87500MAB-25mg / 25 mg GM-87500MAB-50mg / 50 mg GM-87500MAB-100mg / 100 mg

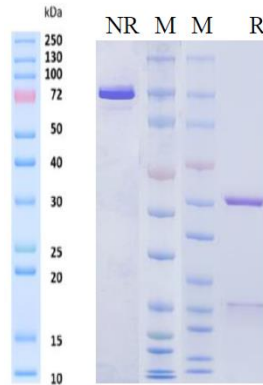
Antibody Information

Expression System	CHO
Aggregation	< 5% as determined by SEC-HPLC
Purity	> 95% as determined by SDS-PAGE
Endotoxin	< 1 EU/mg, determined by LAL gel clotting assay
Sterility	0.2 μm Filtered
Target	GDF15
Clone	Ponsegromab
Alternative Names	PDF; MIC1; PLAB; MIC-1; NAG-1; PTGFB; GDF-15
Source/Isotype	Monoclonal Human IgG1(D356E/L358M/L234A/L235A /L237A),Kappa
Application	Bioactivity-ELISA
Description	Growth/differentiation factor 15 is a protein that in humans is encoded by the GDF15 gene. It is a protein belonging to the transforming growth factor beta superfamily,and it has attracted considerable attention due to its ability to curb food intake and promote weight loss in rodent models of obesity.1 GDF15 is expressed by multiple tissues, primarily the liver and the kidney, but also in white (WAT) and brown adipose tissue (BAT) and skeletal muscle and plays an important part in the integrated cellular stress response.
Formulation	phosphate-buffered solution, pH 7.4.

Version:3.1.3 Revision Date:15/09/2023

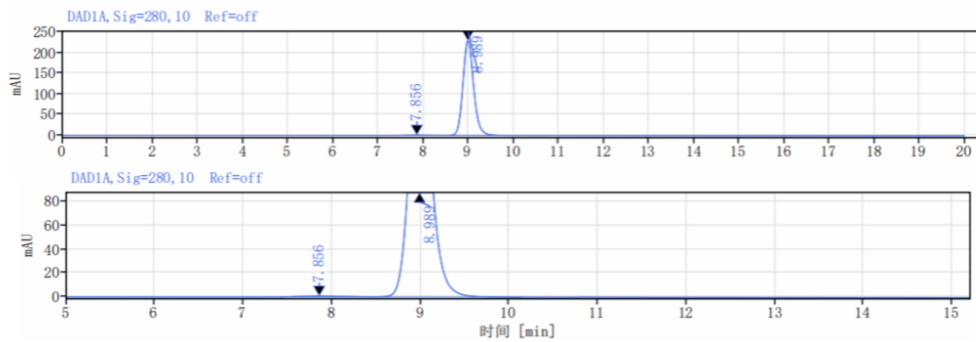
Data Examples

SDS-PAGE



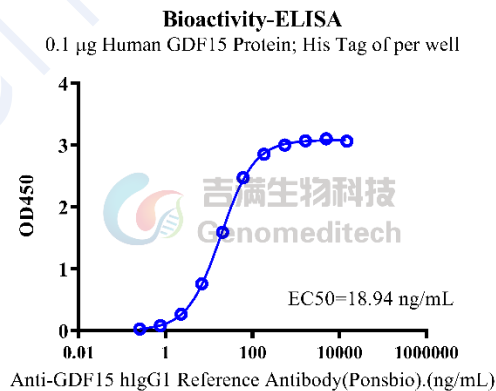
On SDS-PAGE under reducing (R)/non-reducing(N-R) condition. The gel was stained overnight with Coomassie Blue. The purity of the protein is greater than 95%.

SEC-HPLC



The purity of this product is more than 95% verified by SEC-HPLC

Bioactivity-ELISA



Biotinylated Human GDF15 Protein; His-Avi Tag was immobilized at 1 μ g/ml (100 μ l/well) on streptavidin precoated. Increasing concentrations of Anti-GDF15 hIgG1 Reference Antibody(Ponsbio) (Catalog # GM-87500MAB) were added.